

WHAT WILL IT INVOLVE?

At times, non-surgical periodontal treatment does not produce enough of a reduction in the periodontal pocket. At this point, pocket reduction surgery may be suggested. If the pockets remain open and are not maintainable then the condition is likely to progress and may result in eventual tooth loss.

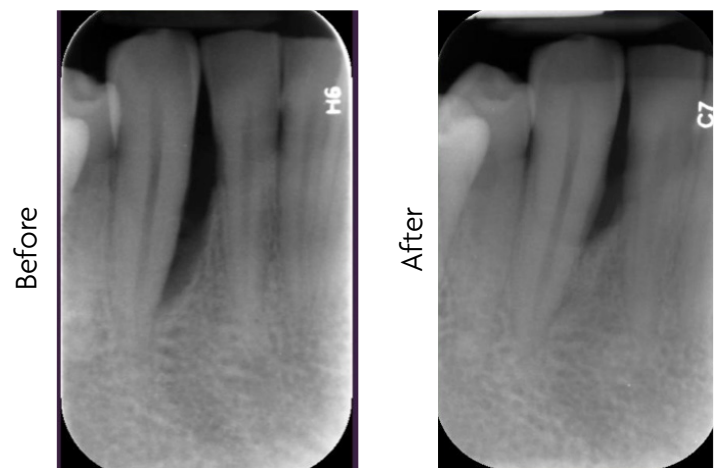
The procedure is carried out under local anaesthesia and you will be completely comfortable during the procedure. It will involve lifting the gums to gain direct access and full vision to the root surfaces. This will ensure thorough and predictable debridement. Furthermore, the gum and bone may be re-shaped and repositioned to a more favourable position. Sometimes if the bone is of an appropriate shape a bone graft may be added (synthetic/human/animal derived). If the latter is likely to be used, you will be informed beforehand. At the end, the gums will be stitched back. You will need to come back 1-2 weeks later for the stitches to be removed and will be reviewed regularly thereafter.

EXAMPLES:

Reshaping the gums



Adding a bone graft



BENEFITS:

- Access to the roots of the teeth to allow for optimum debridement/cleaning
- Ability to reshape the gums and bone
- Ability to add bone grafts if appropriate
- Reduction in the depth/closure of the periodontal pockets
- Increased lifespan of the teeth

RISKS:

- Pain - can be managed using over-the-counter painkillers. These are usually required for 2-4 days
- Swelling and bruising may occur depending on the length and extent of the procedure
- An temporary increase in bleeding from the gums
- Sensitivity but this is short-lasting and can be managed with toothpastes designed to reduce sensitivity
- If the gums have been shaped, as they heal they may recede. This may mean your teeth look slightly longer and the spaces between them may be larger
- Transient or permanent tooth looseness

TIMINGS:

90 minutes for the surgery, 15-30 minutes for reviews

FEES:

Fee: £900 for the surgery, £50 in total for any reviews

T: 0207 112 9036

E: info@rwperio.com

W: www.rwperio.com

A: 22 Wimpole Street, London, W1G 8GQ